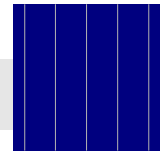


ZXP6-60 Series

Znshinesolar **5BB** Polycrystalline PV Module



60

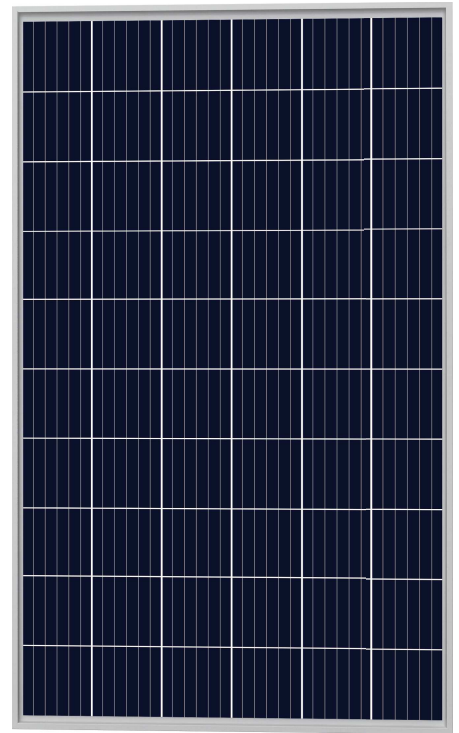
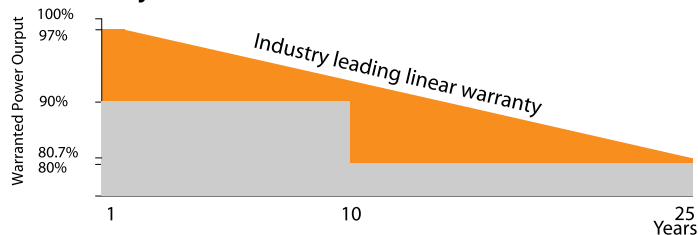
Mono **Poly** Solutions

255W | 260W | 265W | 270W | 275W | 280W | 285W | 290W

Made with selected materials and components to grant quality, duration, efficiency and through outputs, the ZXP6-60 polycrystalline modules by ZNSHINE SOLAR represent a highly flexible solution for diverse installation types, from industrial rooftop plants to small home PV systems or large ground surfaces. This allows you to produce clean energy whilst reducing your energy bill.

ZNSHINE SOLAR' S ZXP6-60 polycrystalline solar modules are tested and approved by international acknowledged laboratories, so that we can offer our customers a reliable and price-quality optimized product. The linear warranty on product outputs further ensures increased security and return on investments over time.

10 years workmanship warranty
25 years output warranty(polycrystalline):2.5% in the first year, thereafter 0.7% per year ending with 80.7% in the 25th year from the Warranty Start Date



5 Busbar Solar Cell

No power loss thanks to improved temperature co-efficient caused by 5 busbar solar cell



High Efficiency

High module efficiency up to 17.72%
Graphene coating can increase about 2W of the module efficiency by rising around 0.5% of the light transmission



Anti PID

Limited power degradation of ZXP6-60 module caused by PID effect is guaranteed under strict testing condition for mass production



Linear Warranty

25-year linear warranty on outputs



Certified to withstand the most challenging environmental conditions

5400 Pa snow load
2400 Pa wind load



Customerization

We can customize the graphene glass modules with self-cleaning function according to customer requirements
Graphene glass modules can increase light transmittance and increase component efficiency



ZNSHINE PV-Tech Co., LTD, founded in 1988, is a world-leading high-performance PV module manufacturer, PV power station developer, EPC and power station operator. With its state-of-the-art production lines, the company boasts module output of 3.2GW. Bloomberg has listed ZNSHINE as a global Tier 1 PV manufacturer and Top 10 reliable PV supplier.

www.znshinesolar.com

ZXP6-60 Series | Znshinesolar 5BB Polycrystalline PV Module



ELECTRICAL PROPERTIES | STC*

Module Type	ZXP6 60-255/P	ZXP6 60-260/P	ZXP6 60-265/P	ZXP6 60-270/P	ZXP6 60-275/P	ZXP6 60-280/P	ZXP6 60-285/P	ZXP6 60-290/P
Nominal Power Watt Pmax(W)	255	260	265	270	275	280	285	290
Power Output Tolerance Pmax(%)	0~+3	0~+3	0~+3	0~+3	0~+3	0~+3	0~+3	0~+3
Maximum Power Voltage Vmp(V)	30.5	30.7	30.9	31.1	31.3	31.5	31.7	31.9
Maximum Power Current Imp(A)	8.37	8.47	8.58	8.69	8.79	8.89	9.00	9.10
Open Circuit Voltage Voc(V)	38.1	38.3	38.5	38.7	38.9	39.1	39.3	39.5
Short Circuit Current Isc(A)	8.79	8.88	8.98	9.07	9.16	9.25	9.34	9.42
Module Efficiency (%)	15.58	15.88	16.19	16.50	16.80	17.11	17.41	17.72

*STC (Standard Test Condition): Irradiance 1000W/m², Module Temperature 25°C, AM 1.5
 *The data above is for reference only and the actual data is in accordance with the practical testing

ELECTRICAL PROPERTIES | NOCT*

Maximum Power Pmax(Wp)	188.3	192.1	195.8	199.7	203.3	207.1	211.2	215.2
Maximum Power Voltage Vmpp(V)	28.4	28.6	28.8	29.1	29.3	29.5	29.7	30.0
Maximum Power Current Imp(A)	6.63	6.71	6.79	6.87	6.95	7.03	7.11	7.17
Open Circuit Voltage Voc(V)	35.1	35.3	35.5	35.6	35.8	36.0	36.2	36.3
Short Circuit Current Isc(A)	7.12	7.19	7.27	7.34	7.42	7.49	7.56	7.63

*NOCT(Nominal Operating Cell Temperature):Irradiance 800W/m²,Ambient Temperature 20°C,AM 1.5,Wind Speed 1m/s
 *The data above is for reference only and the actual data is in accordance with the practical testing

TEMPERATURE RATINGS

NOTC	45°C ±2°C
Temperature coefficient of Pmax	-0.408%/K
Temperature coefficient of Voc	-0.31%/K
Temperature coefficient of Isc	0.06%/K

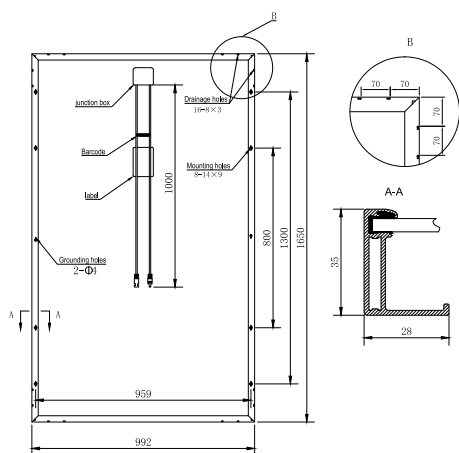
MECHANICAL DATA

Solar cells	Poly 156.75×156.75 mm
Cells orientation	60 (6×10)
Module dimension	1650×992×35 mm
Weight	19.5 kg
Glass	High transparency,low iron,tempered
	Glass 3.2mm (AR-coating)
Junction box	IP 68, 3 diodes
Cables	4 mm ² ,1000 mm
Connectors	MC4-compatible

WORKING CONDITIONS

Maximum system voltage	1000 / 1500 V DC
Operating temperature	-40°C~+85°C
Maximum series fuse	15 A
Maximum load(snow/wind)	5400 Pa / 2400 Pa

DIMENSION OF THE PV MODULE (mm)



PACKAGING INFORMATION

Packing Type	40' HQ
Piece/Box	30
Piece/Container	840 / 896

I-V CURVES OF THE PV MODULE

